

HIGH QUALITY SILAGE  
BY SATELLITE PRECISION



## NUTRIPLUS SAT

- ADVANCED SATELLITE TECHNOLOGY
- PRECISE SILAGE HARVEST ADVICE
- PERSONALISED CUSTOMER REPORT



How to benefit from the service?

Contact your MAS Sales advisor

**mas**seeds®  
UNITED TO GROW

**NUTRIPLUS® Sat Service** is the association of satellite image technology and MAS Seeds agronomic knowledges to follow and anticipate the percentage of dry matter evolution in silage corn to optimize harvest and silo quality.



## AGRONOMIC ISSUES

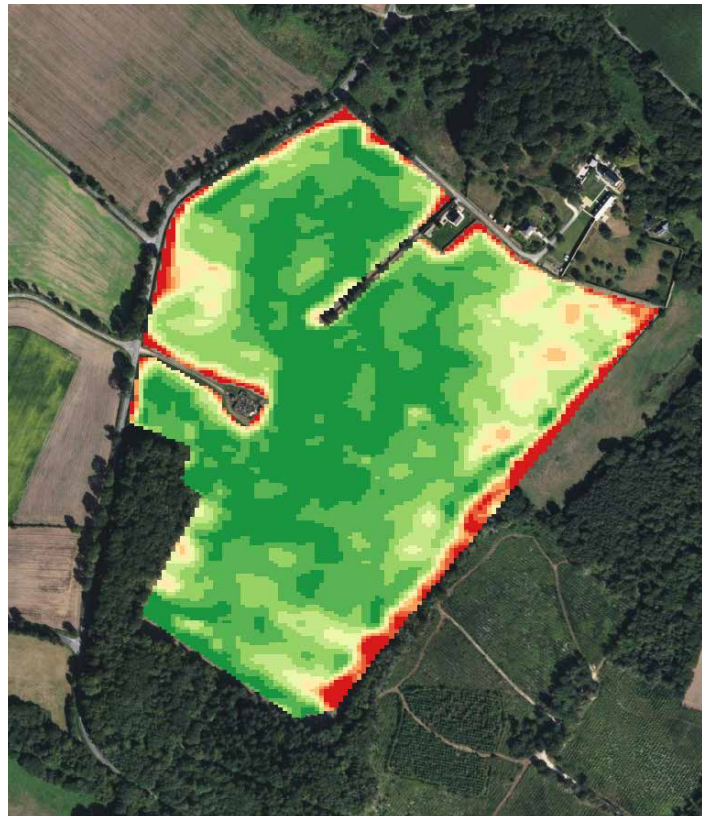
Two out of three farmers do not harvest at the right stage: **50 to 250€/ha losses because of harvest at the wrong stage.**

Silage harvest can not be improvised, it needs to be precise.

## SATELLITE TECHNOLOGY

The satellite technology answers to these issues with the following characteristics:

- Real-time imagery
- High Frequency, new updated image is available every 10-15 days
- High-resolution imagery



## CUSTOMER SERVICES

NUTRIPLUS® SAT Service provide **regular customer reports from 20% dry matter until harvest** following these characteristics:

